

# Brix Foundation

## Brix Rules

### What are Rules?

Rules are knowledge represented in a declarative way, which makes it accessible to domain experts and possible to manage outside of the software applications using them.

### What is Brix Rules?

Brix Rules consists of:

- Rule Editor: Tool that allows experts to view and edit rules
- Rule Execution environment: Software that allows software applications to execute rules

### Why using Brix Rules?

Brix Rules allows business logic, like best practices, policy, rules or regulations, to be managed outside of the software using them. This allows your experts to be hands on with respect to how best practices and policies are implemented in the software.

Since rules are treated declaratively as data, Brix Rules offers the capability of changing rules and letting such changes have immediate effect on the behavior of the

software using these rules. Therefore, experts may test the effects of changes to rules immediately, without having to wait for a new release of the software.

Brix Rules offers a new way of customising applications: A customer may adapt the rules applied by the applications without relying on changes in the software itself.

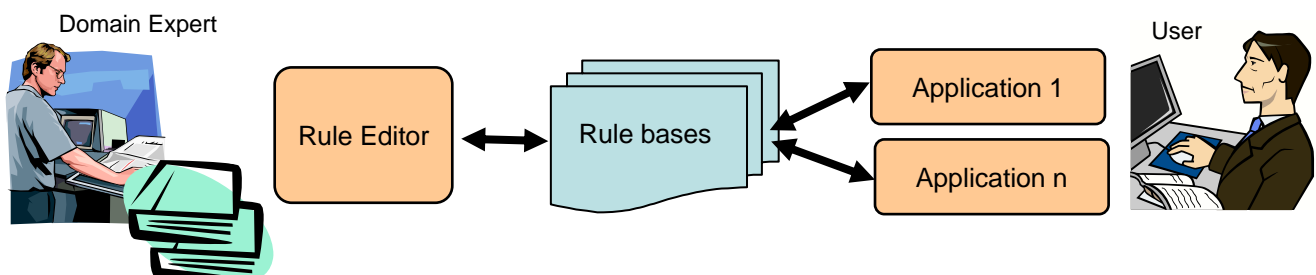
Brix Rules also offers application developers the option of providing custom ways of viewing and editing rules. Using Brix Rules allows rules to be standardised across several applications.

Rules are represented in a technology-neutral way, using XML. A rule base may therefore be used across different technologies, like C++ and .NET. Knowledge is the core asset of a knowledge-intensive enterprise, and managing business logic in a declarative and technology-neutral form, separate from the application code, minimizes the need to transform this knowledge due to technology changes.

All this, together with a suite of special purpose tools to view and edit rules, offers software developers and users a new level of customisation and software adaptability.

### Benefits

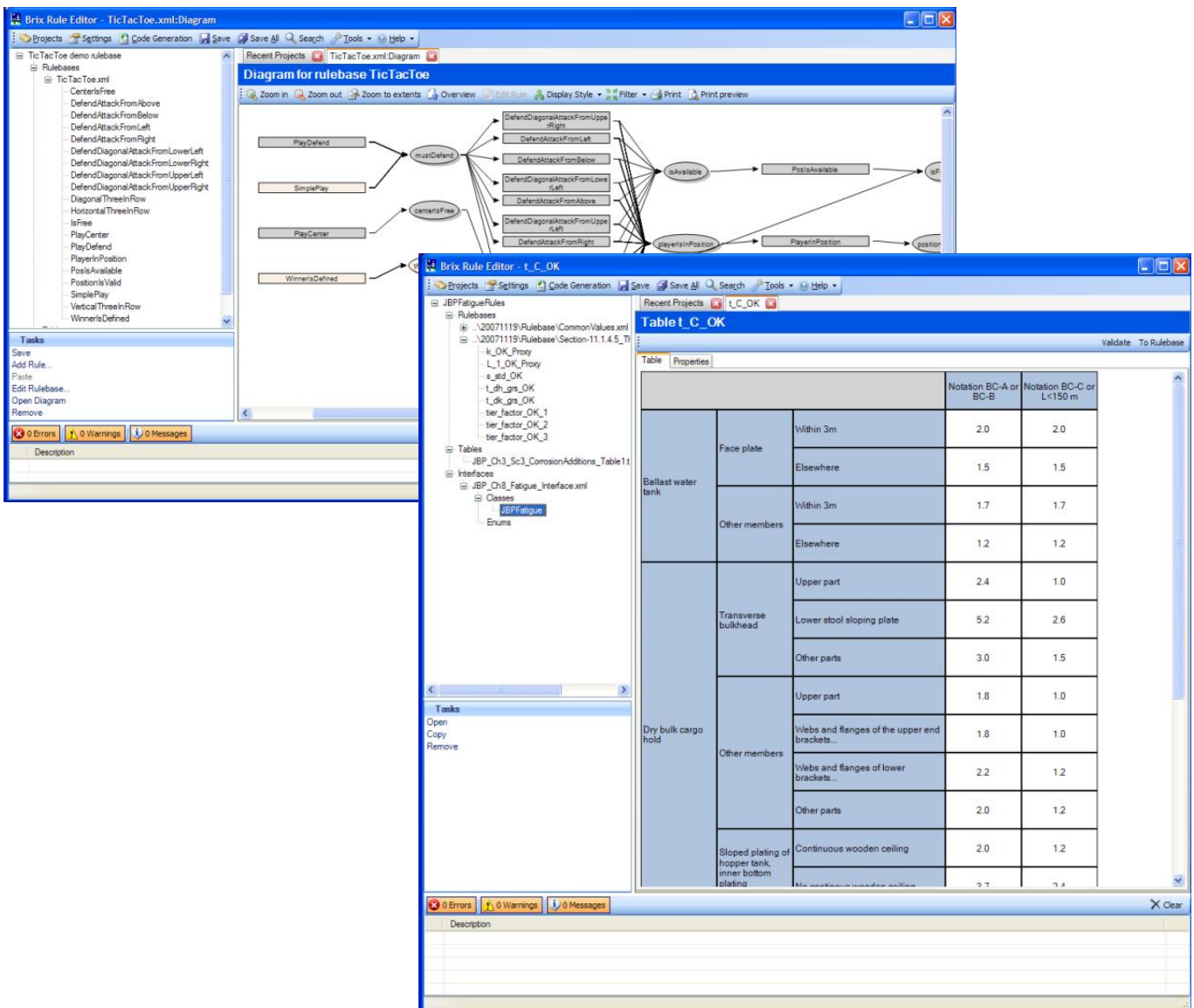
- Externalization of business logic: enabling business rules to be managed outside of application code
- Declarative and explicit representation: Rules treated as data.
- Rules are accessible to domain experts using special purpose tools or directly from the applications
- Dynamic rule editing and execution: Changes can have immediate effect.
- Applications may offer users customised ways of viewing and editing business rules
- Use of customised rules: may enable the customers to adapt the rules used by the software to their own best practices
- Tracing of rule execution simplifies tracking errors in business logic
- Technology-neutral representation of business rules enables rules to be used across different technologies



# Brix Rule Editor

Brix Rule Editor is a tool for editing and viewing Brix rule bases (sets of rules). The Rule Editor allows developers and domain experts to focus on how to express their business logic and on its correctness, completeness and consistency, without regards to how it will eventually be executed. Brix Rule Editor has the following main tools:

- **General-purpose rule editing**
- **Rule graph:** Visualizes the logical relationships between rules and allows for easy navigation in large and complex rule bases
- **Table editor:** Allows decision tables to be viewed and edited. This is an intuitive way of representing business logic in many cases. For rules that can be expressed in decision table form, this tool allows a large number of rules to be edited and viewed simultaneously



Revision 12-2007